

# Product data sheet

# Levolan 60 complete set



Levolan sliding door fitting for leaf weights up to 60 kg

## AREAS OF APPLICATION

- For leaf weights up to 60 kg
- For glass elements toughened safety glass 8, 10 and 12 mm as well as laminated safety glass up to 10 mm (with additional LSG kit) and timber leaves up to a weight of 60 kg
- For wall and ceiling installation
- Suitable for interior use

# Levolan 60 complete set



## PRODUCT FEATURES

→ Design sliding door fitting for glass and timber leaves

## TECHNICAL DATA

Productname	Levolan 60 complete set
Leaf material	Glass, Plastic, Metal, Wood
Leaf weight (max.)	60 kg
Leaf weight (max.) with draw-in damper	60 kg
Number of leaves	1-leaf, 2-leaf
Leaf width (min.)	400 mm
Leaf width (max.)	1240 mm
Test cycles	100000
Corrosion protection class	3
Pane thickness	8 - 12 mm
Type of installation	Wall, Ceiling
Side panel	Yes

## VARIANTS / ORDER INFO

Designation	Description	Ident-No.	Colour	Dimensions	Leaf width (min.)
Levolan 60 complete set	For wall and ceiling installation	147169	Stainless steel optic	2450 mm	400 mm
Levolan 60 complete set	For wall and ceiling installation	147166	EV1	2450 mm	400 mm
Levolan 60 complete set	For wall and ceiling installation	147167	Stainless steel optic	1650 mm	400 mm
Levolan 60 complete set	For wall and ceiling installation	147164	EV1	1650 mm	400 mm
Levolan 60 complete set	For wall and ceiling installation	147165	EV1	2050 mm	400 mm
Levolan 60 complete set	For wall and ceiling installation	147168	Stainless steel optic	2050 mm	400 mm

# Levolan 60 complete set



## ACCESSORIES

### FLOOR GUIDE FOR WOODEN LEAF

Floor guide for wooden leaves mounted on the floor



Designation	Description	Ident-No.	Colour
Floor guide for timber leaf standard	Without attachment material	002191	Galvanised

### SPACER PROFILE FOR WALL CLEARANCE LEVOLAN 60 / 120

Spacer profile for wall installation of Levolan 60/120



Designation	Description	Ident-No.	Colour	Dimensions
Spacer profile for wall clearance Levolan 60 / 120	10 mm additional space, can be stacked up to 20 mm	157993	Stainless steel optic	2850 mm
Spacer profile for wall clearance Levolan 60 / 120 *	10 mm additional space, can be stacked up to 20 mm	147571	Stainless steel optic	2450 mm
Spacer profile for wall clearance Levolan 60 / 120	10 mm additional space, can be stacked up to 20 mm	147557	EV1	2450 mm
Spacer profile for wall clearance Levolan 60 / 120 *	10 mm additional space, can be stacked up to 20 mm	147559	Stainless steel optic	1650 mm
Spacer profile for wall clearance Levolan 60 / 120	10 mm additional space, can be stacked up to 20 mm	147572	Stainless steel optic	6000 mm
Spacer profile for wall clearance Levolan 60 / 120	10 mm additional space, can be stacked up to 20 mm	147558	EV1	6000 mm
Spacer profile for wall clearance Levolan 60 / 120	10 mm additional space, can be stacked up to 20 mm / bespoke configuration	147573		
Spacer profile for wall clearance Levolan 60 / 120	10 mm additional space, can be stacked up to 20 mm	157991	EV1	2850 mm
Spacer profile for wall clearance Levolan 60 / 120 *	10 mm additional space, can be stacked up to 20 mm	147560	Stainless steel optic	2050 mm
Spacer profile for wall clearance Levolan 60 / 120	10 mm additional space, can be stacked up to 20 mm	147556	EV1	2050 mm
Spacer profile for wall clearance Levolan 60 / 120	10 mm additional space, can be stacked up to 20 mm	147555	EV1	1650 mm

# Levolan 60 complete set



## CLAMPING PROFILE FOR ATTACHING WOODEN / METAL LEAVES

Clamping profile for connecting timber leaves and Levolan 60/120 roller carriage



Designation	Description	Ident-No.	Colour	Dimensions
Clamping profile for attaching wooden / metal leaves	for the attachment of door leaves made of wood / metal / plastic to Levolan 60 / 120	146958	EV1	1500 mm
Clamping profile for attaching wooden / metal leaves	for the attachment of door leaves made of wood / metal / plastic to Levolan 60 / 120	146957	EV1	1000 mm
Clamping profile for attaching wooden / metal leaves	Bespoke	146959	EV1	

## LEVOLAN SOFTSTOPDUO SET, DAMPED ON BOTH SIDES, UP TO 100 KG

Levolan SoftStopDuo draw-in damping on both sides for leaf weights up to 100 kg



Designation	Description	Ident-No.	Leaf width (min.)	Leaf width (max.)	Leaf weight (max.)
Levolan SoftStopDuo set, damped on both sides, up to 100 kg	for draw-in damping left & right, consisting of; 1 x double damping unit, 2 x spacers - Levolan 60 and 2 x spacers - Levolan 120 for cover panel bracket, 2 x adjustable triggers, can also be retrofitted - for Levolan 60 minimum leaf width 770 mm, for Levolan 120 minimum leaf width 1010 mm	146402	770 mm	1240 mm	100 kg

## LEVOLAN 60 SOFTSTOP SET, DAMPED ON ONE SIDE, UP TO 60 KG

Levolan SoftStop one-sided draw-in damping left-hand version



Designation	Description	Ident-No.	Leaf width (min.)	Leaf width (max.)	Leaf weight (max.)
Levolan 60 SoftStop set, damped on one side, up to 60 kg	for draw-in damping left, consisting of: 1 x damping unit, 1 x spacer for cover panel bracket, 1 x trigger, can also be retrofitted - minimum leaf width 570 mm	146370	570 mm	1240 mm	60 kg

# Levolan 60 complete set



## LEVOLAN 60 SOFTSTOP SET, DAMPED ON ONE SIDE, UP TO 60 KG

Levolan SoftStop draw-in damping on one side right version



Designation	Description	Ident-No.	Leaf width (min.)	Leaf width (max.)	Leaf weight (max.)
Levolan 60 SoftStop set, damped on one side, up to 60 kg	for draw-in damping right, consisting of: 1 x damping unit, 1 x spacer for cover panel bracket, 1 x trigger, can also be retrofitted - minimum leaf width 570 mm	146401	570 mm	1240 mm	60 kg

## FLUSH PULL, ANGULAR \*

Stainless steel shell in rectangular design 128 x 82 mm



Designation	Description	Ident-No.	Colour	Dimensions	Type of installation
Flush pull, angular	Stainless steel shell in rectangular design 128 x 82 mm	169808	Satin stainless steel	128 x 82 x 20 mm	Door leaf installation

## FLUSH PULL, OVAL \*

Stainless steel shell in oval design 40 x 120 mm



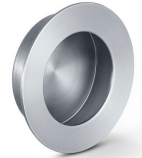
Designation	Description	Ident-No.	Colour	Dimensions	Type of installation
Flush pull, oval	Stainless steel shell in oval design 40 x 120 mm	169809	Satin stainless steel	120 x 40 x 14.5 mm	Door leaf installation

# Levolan 60 complete set



## FLUSH PULL, ROUND \*

Stainless steel shell in round design, 65 mm diameter



Designation	Description	Ident-No.	Colour	Dimensions	Type of installation
Flush pull, round	Stainless steel shell in round design, 65 mm diameter	169810	Satin stainless steel	16 mm	Door leaf installation

## HANDLE RING, GLASS \*

Stainless steel operating device for all-glass door leaves



Designation	Description	Ident-No.	Colour	Dimensions	Pane thickness
Handle ring, glass	Handle ring for pane thickness 10 - 12 mm, 58 mm outer diameter	169811	Satin stainless steel	26 mm	10 - 12 mm

## PULL HANDLE D-SHAPE \*

Stainless steel pull handle pair



Designation	Description	Ident-No.	Colour	Pane thickness	Type of installation
Pull handle D-shape *	Push handle set for door thicknesses up to 50 mm and 10-12 mm pane thickness (set) - diameter: 22 mm; hole spacing: 300 mm	169819	Satin stainless steel	10 - 12 mm	Door leaf installation, Glass installation
Pull handle D-shape *	Push handle set for door thicknesses up to 50 mm and 10-12 mm pane thickness (set) - diameter: 19 mm; hole spacing: 200 mm	169818	Satin stainless steel	10 - 12 mm	Door leaf installation, Glass installation
Pull handle D-shape *	Push handle set for door thicknesses up to 50 mm and 10-12 mm pane thickness (set) - diameter: 19 mm; hole spacing: 150 mm	169817	Satin stainless steel	10 - 12 mm	Door leaf installation, Glass installation
Pull handle D-shape *	Push handle set for door thicknesses up to 50 mm and 10-12 mm pane thickness (set) - diameter: 25 mm; hole spacing: 300 mm	169820	Satin stainless steel	10 - 12 mm	Door leaf installation, Glass installation

# Levolan 60 complete set



## PULL HANDLE H-SHAPE

Stainless steel pull handle pair



Designation	Description	Ident-No.	Colour	Pane thickness	Type of installation
Pull handle H-shape	Push handle set for door thicknesses up to 50 mm and 10-12 mm pane thickness (set) - diameter: 25 mm; hole spacing: 300 mm; total length: 400 mm	169822	Satin stainless steel	10 - 12 mm	Door leaf installation, Glass installation
Pull handle H-shape *	Push handle set for door thicknesses up to 50 mm and 10-12 mm pane thickness (set) - diameter: 25 mm; hole spacing: 250 mm; total length: 350 mm	169821	Satin stainless steel	10 - 12 mm	Door leaf installation, Glass installation
Pull handle H-shape *	Push handle set for door thicknesses up to 50 mm and 10-12 mm pane thickness (set) - diameter: 32 mm; hole spacing: 600 mm; total length: 800 mm	169823	Satin stainless steel	10 - 12 mm	Door leaf installation, Glass installation
Pull handle H-shape *	Push handle set for door thicknesses up to 50 mm and 10-12 mm pane thickness (set) - diameter: 32 mm; hole spacing: 1200 mm; total length: 1400 mm	169824	Satin stainless steel	10 - 12 mm	Door leaf installation, Glass installation

## FLOOR GUIDE SET GLASS GUIDE

Floor guide for glass sliding leaves for glass thickness 8, 10 and 12 mm



Designation	Description	Ident-No.	Colour	Pane thickness
Floor guide for glass leaf (stainless steel)	For 8, 10, 12 mm glass	134990	Stainless steel	8 - 12 mm

\* The products designated above may vary in form, type, characteristics, function, or availability depending on the country. Please get in touch with your GEZE contact person if you have any questions.